


CUT PIN 3 TO KEY CONNECTOR

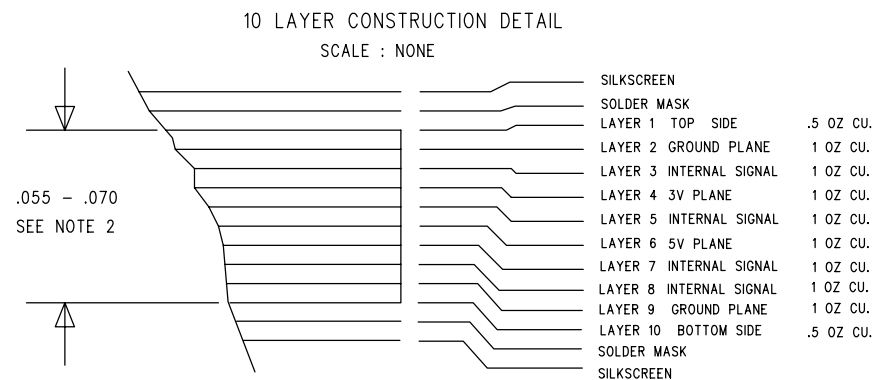
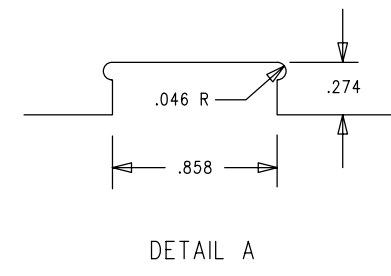
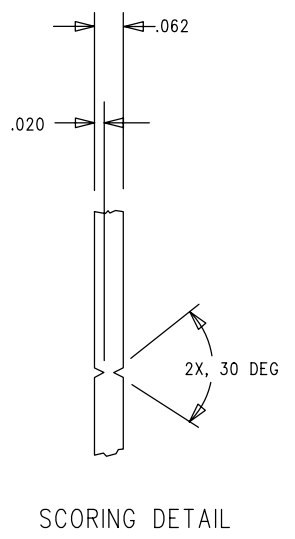
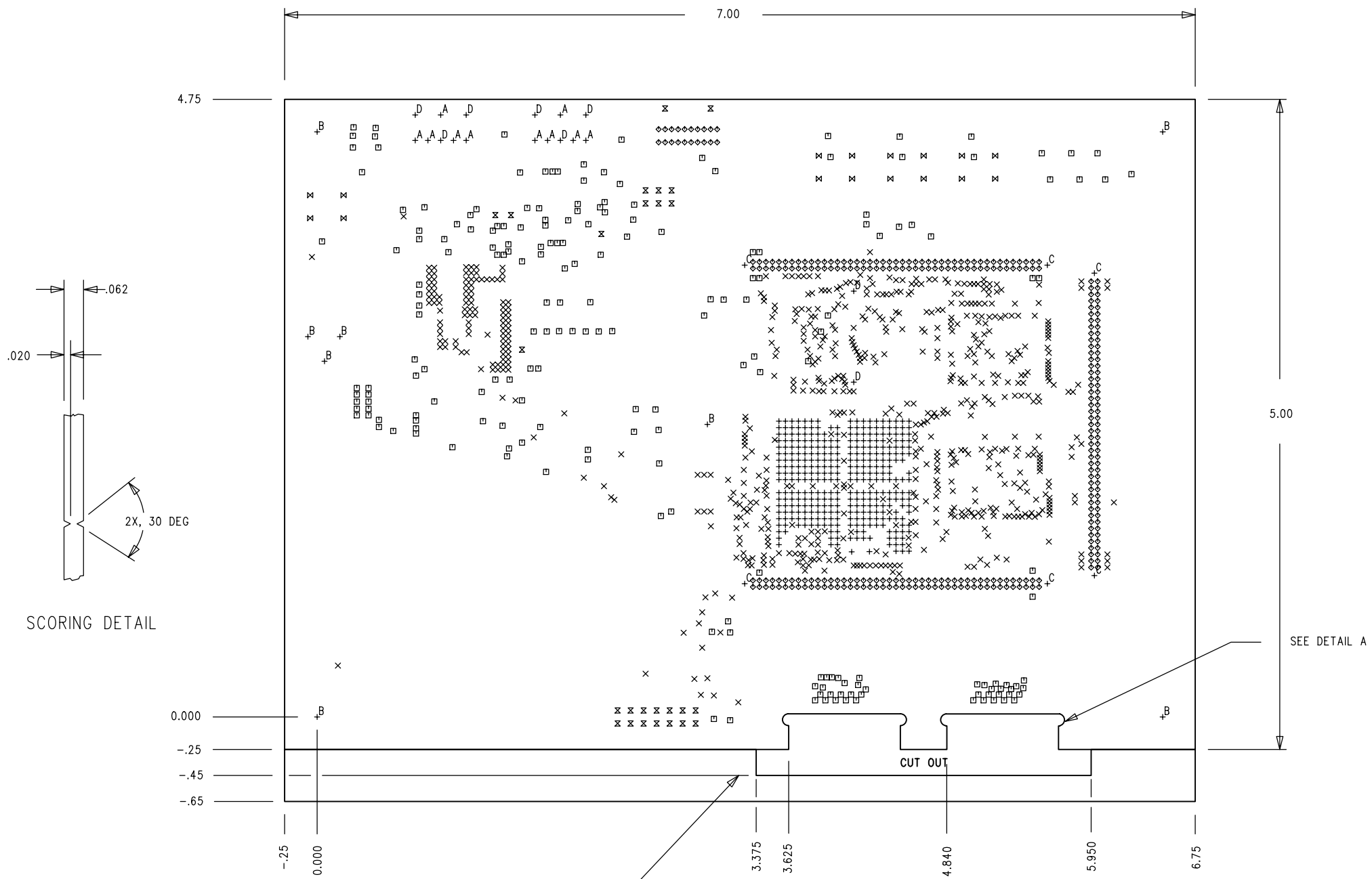
SEE NOTE 1

NOTES:

1. POPULATE M1-M5 WITH RUBBER FEET.
2. BEFORE WAVE SOLDERING MASK HOLES FOR TP1, TP2, TP3, TP4, P1, P2, P3.

UNLESS OTHERWISE SPECIFIED DIMENSIONS ARE IN INCHES TOLERANCES ARE : .XX +/- .010 .XXX +/- .005	CONTRACT NO.		 20 Cotton Road Nashua, New Hampshire 03063 (603) 883-2430 FAX (603) 882-2655
	APPROVALS	DATE	
MATERIAL	DRAWN	06/27/07	ASSEMBLY DRAWING TOP SIDE ADSP-21160 EZ-KIT LITE
	CHECKED		
FINISH	ENGINEERING		SIZE B DWG. NO. ASSMAA0164-2001-REF REV. 2.0
	QUALITY		
DO NOT SCALE THIS DRAWING	MANUFACTURING		SCALE 1 : 1 SHEET 1 OF 2



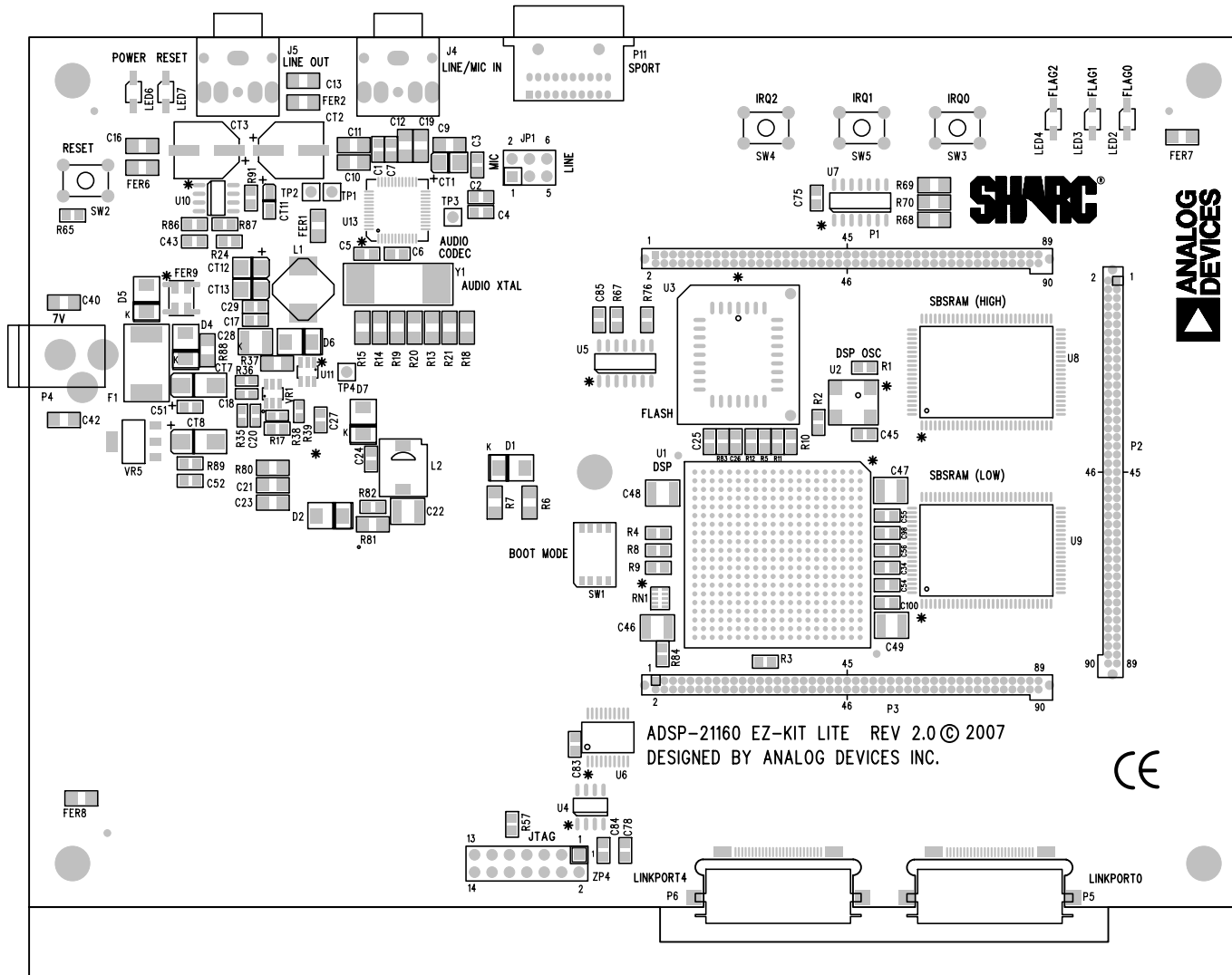


UNLESS OTHERWISE SPECIFIED

- BOARD TO BE FABRICATED PER IPC-6012A, CLASS 2.
- MATERIAL: POLYCLAD FR-370HR OR EQUIVALENT. OUTER LAYERS 1/2 OZ/SQFT CU INNER LAYERS 1/2 OZ/SQFT CU FINISHED .062 (.055 MIN .070 MAX SEE DETAIL). VENDOR MAY ADJUST THICKNESS TO FULFILL NOTE 9.
- PLATING: ADDITIONAL CU PLATING 1 OZ/SQFT ALL HOLES PLATED THROUGH, EXCEPT AS NOTED IN HOLE LEGEND. MINIMUM PTH BARREL THICKNESS = 0.0008" MINIMUM AVERAGE PER IPC-6012A WITH AMENDMENT 1, CLASS 2 REQUIREMENTS. WITH NO SINGLE MEASUREMENT LESS THAN 0.00071 IN THE PLATED HOLES.
- FINISH: SURFACES TO BE COATED BY ENIG OF 2 TO 10 MICROINCHES OVER A MINIMUM OF 60-200 MICROINCHES OF LOW STRESS NICKEL. NO ADDITIONAL ELECTROLYTIC HARD GOLD IS REQUIRED FOR CONTACTS.
- SOLDERMASK: SOLDER MASK TO BE TRANSPARENT GREEN LPI BOTH SIDES PER GERBER FILES.
- SILKSCREEN: WHITE EPOXY INK, APPLY TO BOTH SIDES PER GERBER FILES.
- ARTWORK: MINIMUM FEATURE SIZE = 0.00492 MINIMUM AIR GAP = 0.00475
- ALL DIMENSIONS ARE IN INCHES.
- CONTROLLED IMPEDANCE: BOARD TO BE BUILT TO YIELD CONTROLLED IMPEDANCE OF 60 OHMS +/- 10% ON ALL .00492" LINE WIDTHS
- DO NOT ADD NON-FUNCTIONAL COPPER THIEVING ON OPEN AREAS OF OUTER LAYERS. THIEVING IS ALLOWED ON INNER LAYERS, UNLESS OTHERWISE SPECIFIED.
- VIAS SHOULD BE COVERED ACCORDING TO ONE OF THE FOLLOWING METHODS. METHOD 1 IS PREFERRED. METHOD 1: VIAS MUST BE FILLED WITH SOLDERMASK MATERIAL AFTER ELECTROLESS NICKEL/IMMERSION GOLD AND BEFORE PRIMARY LPI MASK. AFTER THE FILL IS CURED, THE PRIMARY MASK IS THEN APPLIED WITH NO VIA APERTURES BOTH SIDES. METHOD 2: AFTER APPLICATION OF FULL BODY ELECTROLESS NICKEL/IMMERSION GOLD, APPLY PRIMARY MASK WITH REDUCED VIA APERTURES THAT ARE 6 MILS LARGER THAN DRILLED HOLE DIAMETER BOTH SIDES. THEN APPLY SOLDER MASK PLUG ON COMPONENT SIDE.
- VIA HOLES (.006, .010, .012) REQUIRE TANGENCY ONLY, INSTEAD OF ANNULAR RING.
- TEARDROP PADS ARE ACCEPTABLE WHERE NEEDED.
- BUILD AS 1-UP PCB.
- USE IPC-D-356A NETLIST AS SUPPLIED FOR CHECKING. 2 SHORTS ARE PRESENT BETWEEN AGND AND GND ON LAYERS 2 & 9.
- V SCORE 1 LINE ON BOTH SIDES OF THE BOARD. SEE DETAIL.

SIZE	QTY	SYM	PLATED	TOL
6	331	+	YES	+0.003/-0.006
10	668	X	YES	+0.003/-0.010
14	205	□	YES	+0.003/-0.014
24	290	◇	YES	+/-0.003
37	26	⊗	YES	+/-0.003
41	16	⊗	YES	+/-0.003
70	10	+ <sup>A</sup>	YES	+/-0.003
125	8	+ <sup>B</sup>	YES	+/-0.005
53	6	+ <sup>C</sup>	NO	+0.003/-0.000
70	8	+ <sup>D</sup>	NO	+/-0.003

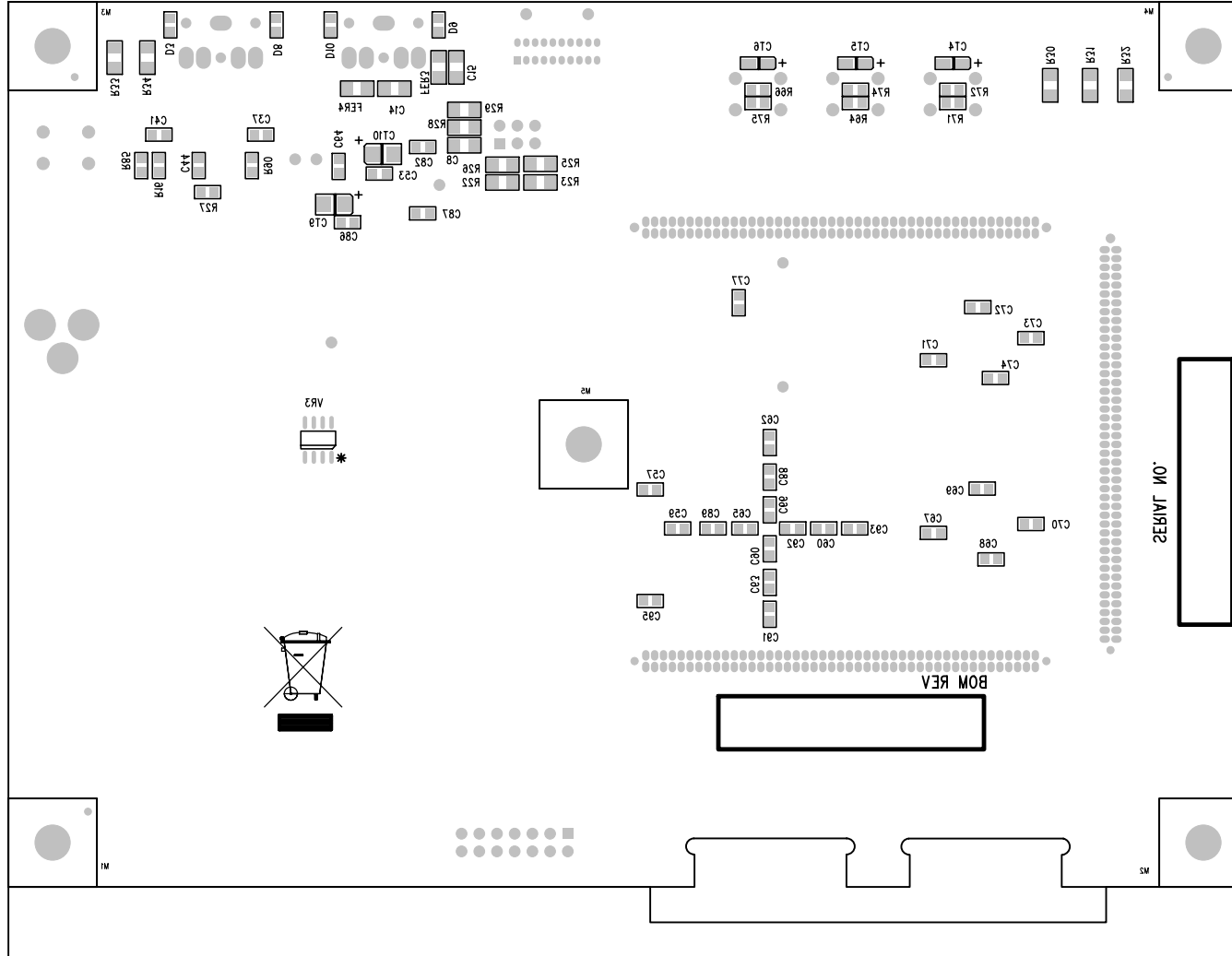
UNLESS OTHERWISE SPECIFIED DIMENSIONS ARE IN INCHES TOLERANCES ARE : .XX +/- .010 .XXX +/- .005	CONTRACT NO.		20 Cotton Road Nashua, New Hampshire 03063 (603) 883-2430 FAX (603) 882-2655
	APPROVALS	DATE	
MATERIAL	DRAWN	06/27/07	FABRICATION DRAWING ADSP-21160 EZ-KIT LITE
SEE NOTES	CHECKED		
FINISH	ENGINEERING		SIZE B DWG. NO. A0164-2001-REF REV. 2.0
SEE NOTES	QUALITY		
DO NOT SCALE THIS DRAWING	MANUFACTURING		SCALE 1 : 1 SHEET 1 OF 1




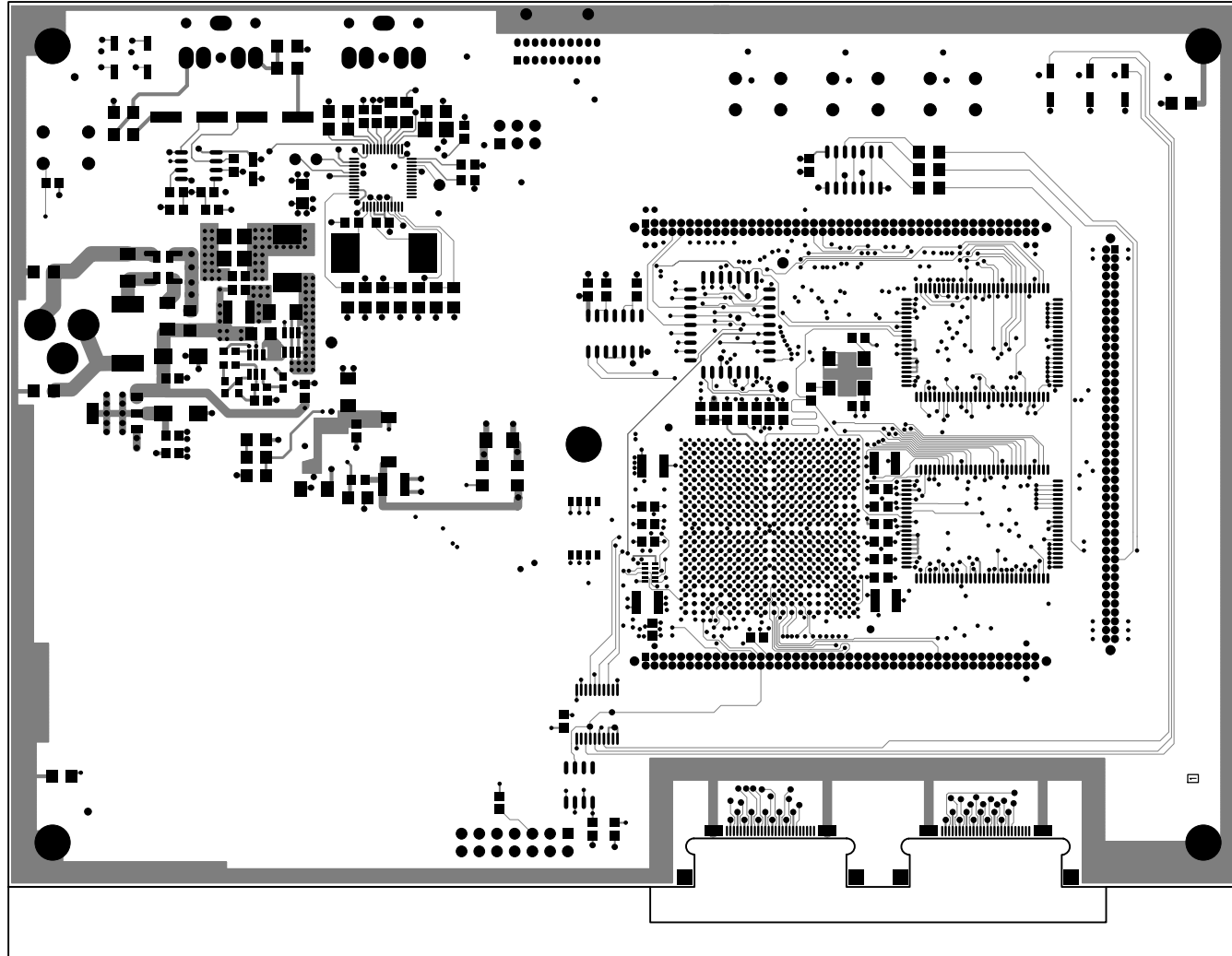
ADSP-21160 EZ-KIT LITE REV 2.0 © 2007  
DESIGNED BY ANALOG DEVICES INC.




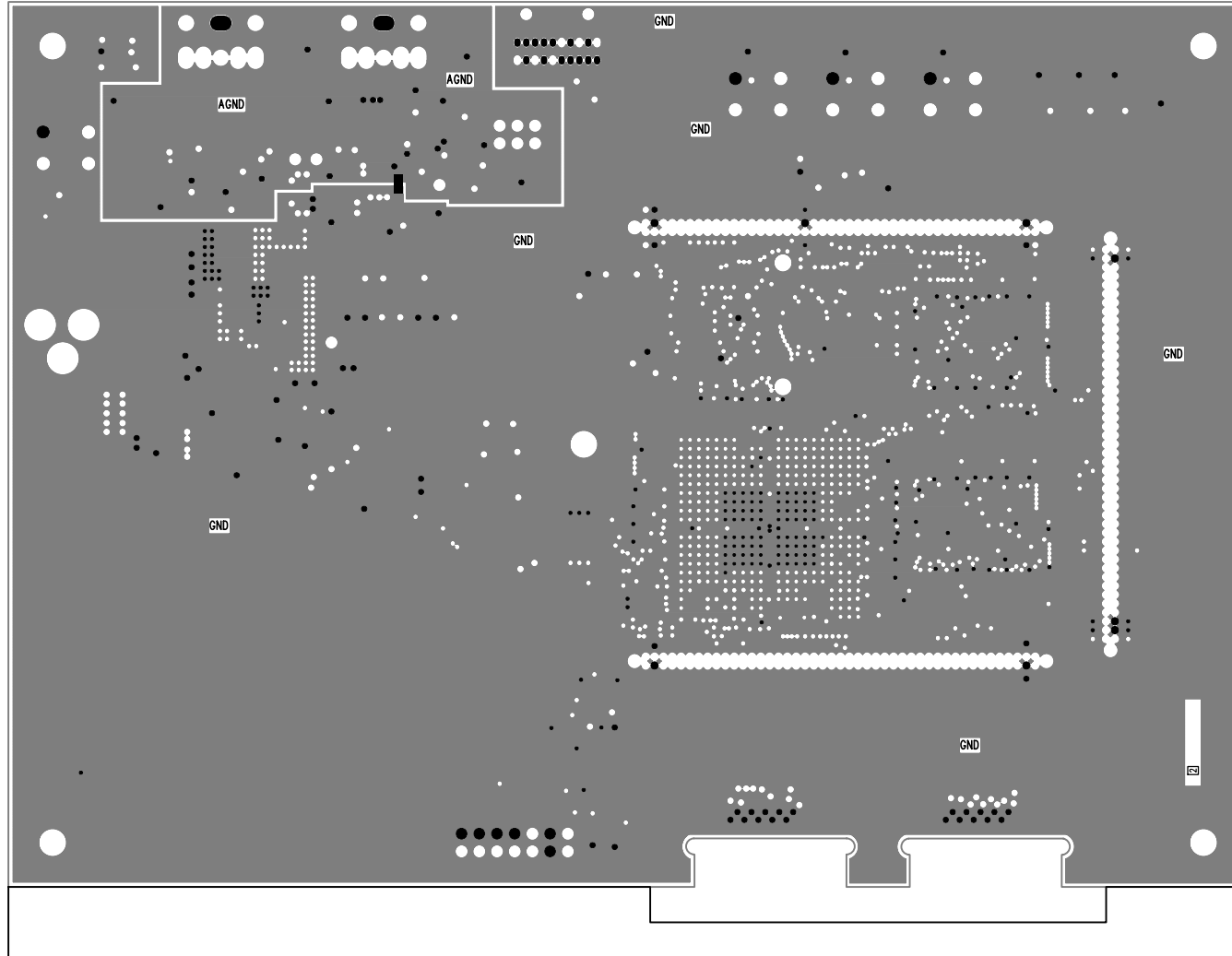
UNLESS OTHERWISE SPECIFIED DIMENSIONS ARE IN INCHES TOLERANCES ARE : .XX +/- .010 .XXX +/- .005	CONTRACT NO.		20 Cotton Road Nashua, New Hampshire 03063 (603) 883-2430 FAX (603) 882-2655
	APPROVALS	DATE	
MATERIAL	DRAWN	06/27/07	SILKSCREEN TOP SIDE ADSP-21160 EZ-KIT LITE
	CHECKED		
FINISH	ENGINEERING		SIZE B DWG. NO. A0164-2001-REF REV. 2.0
	QUALITY		
DO NOT SCALE THIS DRAWING	MANUFACTURING		SCALE 1 : 1 SHEET 13 OF 16




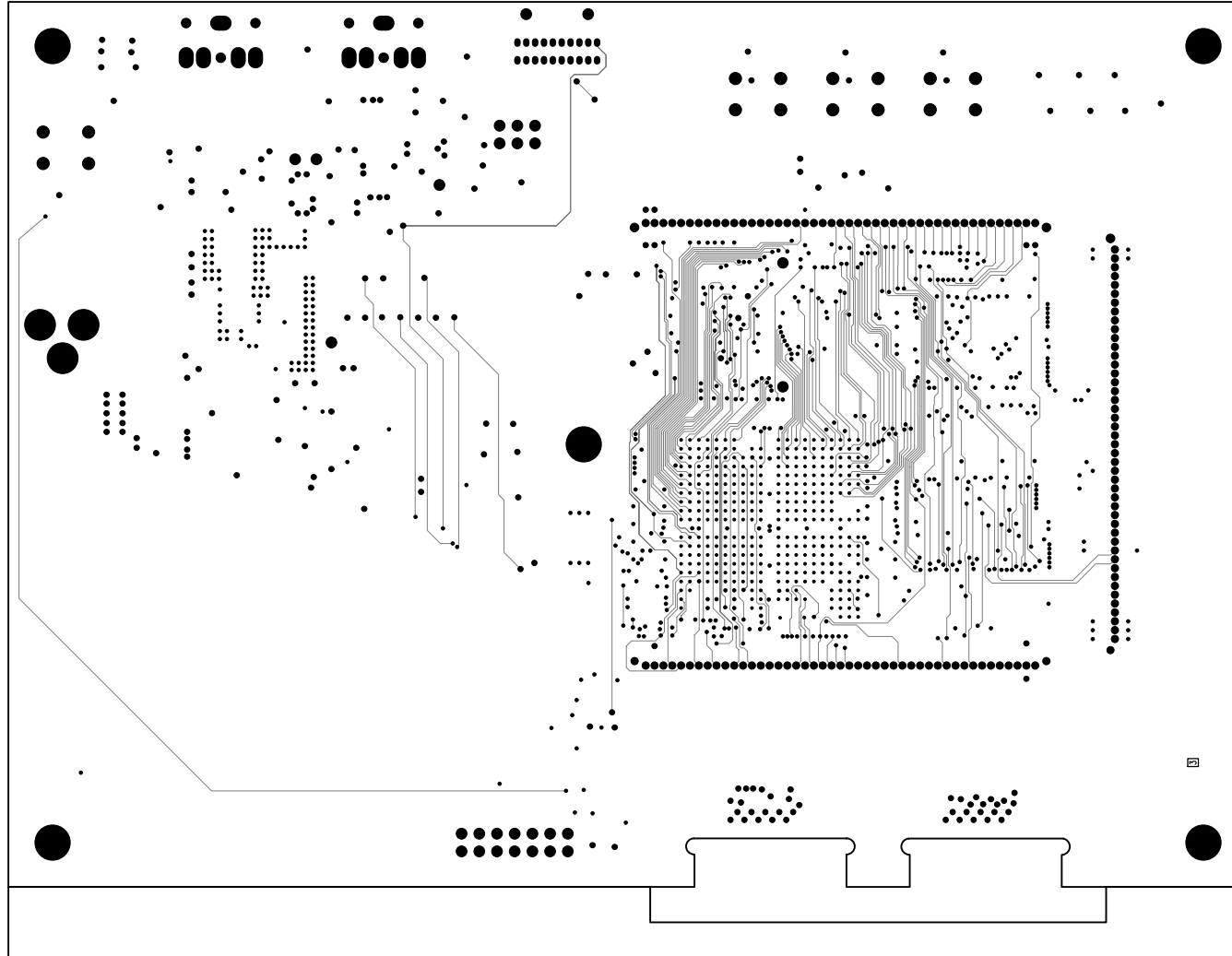
UNLESS OTHERWISE SPECIFIED DIMENSIONS ARE IN INCHES TOLERANCES ARE : .XX +/- .010 .XXX +/- .005	CONTRACT NO.		 20 Cotton Road Nashua, New Hampshire 03063 (603) 883-2430 FAX (603) 882-2655
	APPROVALS	DATE	
MATERIAL	DRAWN	06/27/07	SILKSCREEN BOTTOM SIDE ADSP-21160 EZ-KIT LITE
	CHECKED		
FINISH	ENGINEERING		SIZE B
	QUALITY		DWG. NO. A0164-2001-REF
DO NOT SCALE THIS DRAWING	MANUFACTURING		REV. 2.0
SCALE 1 : 1			SHEET 14 OF 16




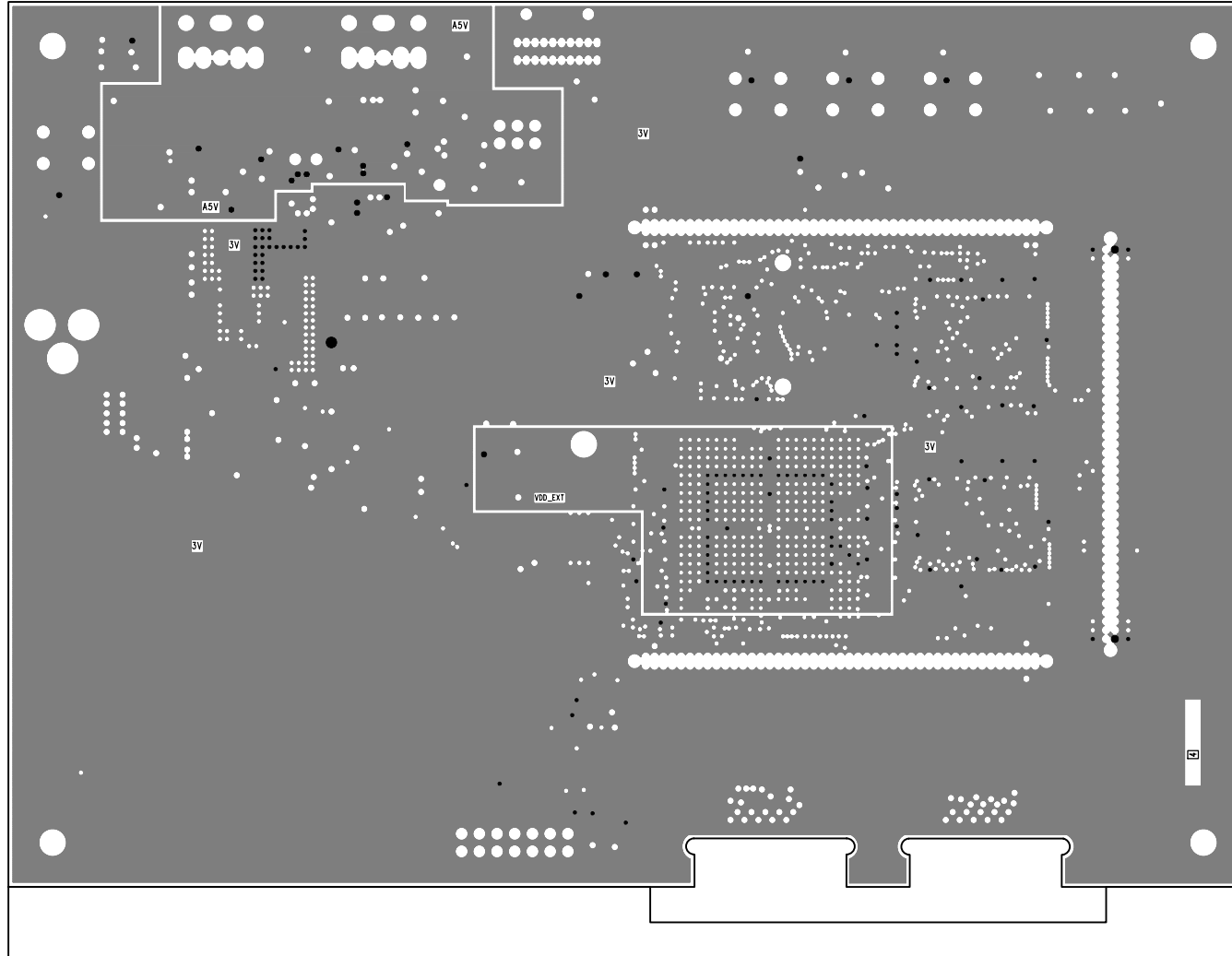
UNLESS OTHERWISE SPECIFIED DIMENSIONS ARE IN INCHES TOLERANCES ARE : .XX +/- .010 .XXX +/- .005	CONTRACT NO.		 20 Cotton Road Nashua, New Hampshire 03063 (603) 883-2430 FAX (603) 882-2655
	APPROVALS	DATE	
MATERIAL	DRAWN	06/27/07	LAYER 1 TOP SIDE ADSP-21160 EZ-KIT LITE
	CHECKED		
FINISH	ENGINEERING		SIZE B
	QUALITY		
DO NOT SCALE THIS DRAWING	MANUFACTURING		DWG. NO. A0164-2001-REF SCALE 1 : 1
			REV. 2.0 SHEET 1 OF 16




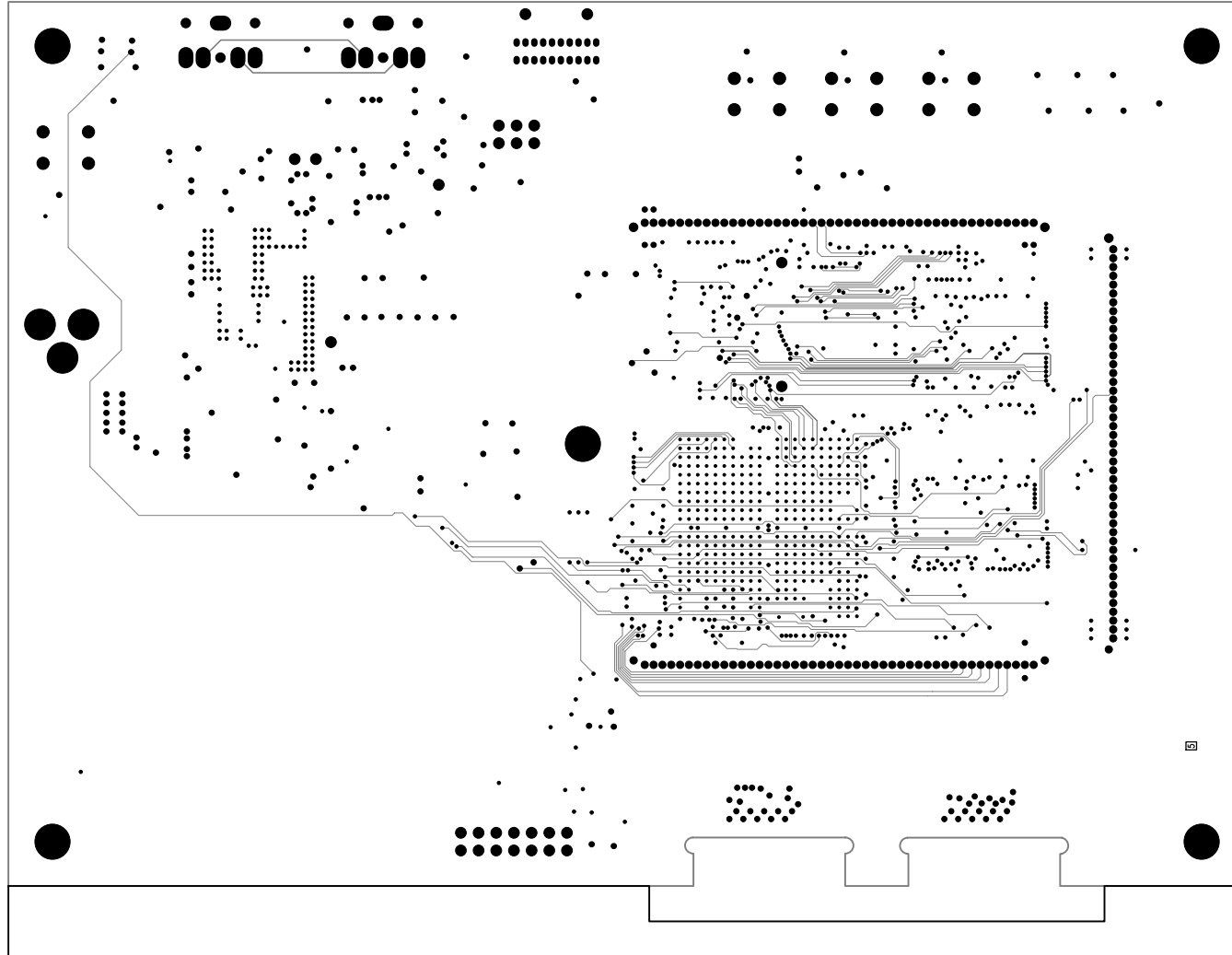
UNLESS OTHERWISE SPECIFIED DIMENSIONS ARE IN INCHES TOLERANCES ARE : .XX +/- .010 .XXX +/- .005	CONTRACT NO.		 20 Cotton Road Nashua, New Hampshire 03063 (603) 883-2430 FAX (603) 882-2655
	APPROVALS	DATE	
MATERIAL	DRAWN	06/27/07	LAYER 2 GROUND PLANE ADSP-21160 EZ-KIT LITE
	CHECKED		
FINISH	ENGINEERING		SIZE B
	QUALITY		DWG. NO. A0164-2001-REF
DO NOT SCALE THIS DRAWING	MANUFACTURING		REV. 2.0
SCALE 1 : 1			SHEET 2 OF 16




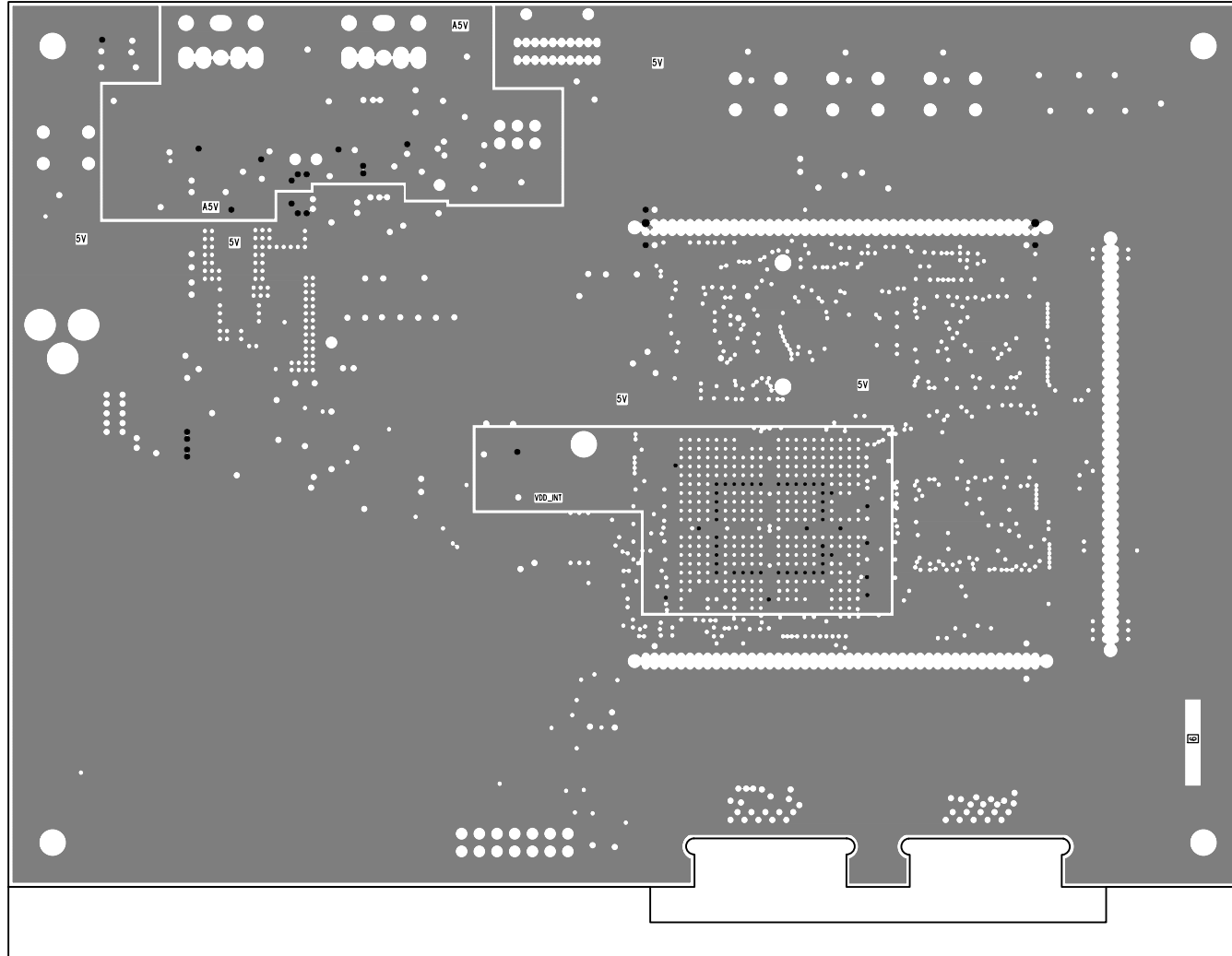
UNLESS OTHERWISE SPECIFIED DIMENSIONS ARE IN INCHES TOLERANCES ARE : .XX +/- .010 .XXX +/- .005	CONTRACT NO.		 20 Cotton Road Nashua, New Hampshire 03063 (603) 883-2430 FAX (603) 882-2655	
	APPROVALS	DATE		
MATERIAL	DRAWN	06/27/07	LAYER 3 INTERNAL SIGNAL ADSP-21160 EZ-KIT LITE	
	CHECKED			
FINISH	ENGINEERING		SIZE <b>B</b>	
	QUALITY			
DO NOT SCALE THIS DRAWING	MANUFACTURING		DWG. NO. A0164-2001-REF	REV. 2.0
		SCALE 1 : 1	SHEET 3 OF 16	




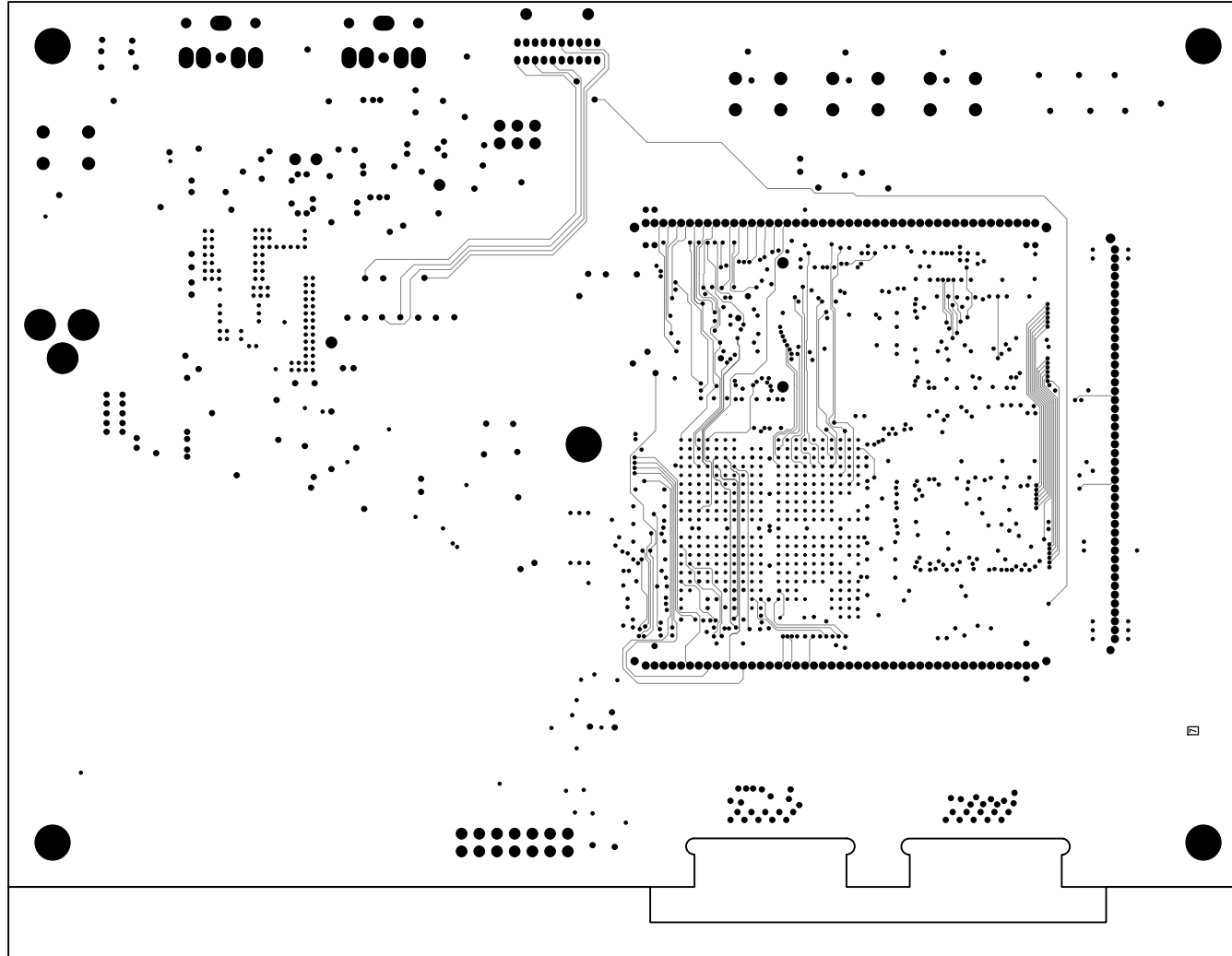
UNLESS OTHERWISE SPECIFIED DIMENSIONS ARE IN INCHES TOLERANCES ARE : .XX +/- .010 .XXX +/- .005	CONTRACT NO.		 20 Cotton Road Nashua, New Hampshire 03063 (603) 883-2430 FAX (603) 882-2655
	APPROVALS	DATE	
MATERIAL	DRAWN	06/27/07	LAYER 4 3V PLANE ADSP-21160 EZ-KIT LITE
	CHECKED		
FINISH	ENGINEERING		SIZE B
	QUALITY		
DO NOT SCALE THIS DRAWING	MANUFACTURING		DWG. NO. A0164-2001-REF SCALE 1 : 1
			REV. 2.0 SHEET 4 OF 16




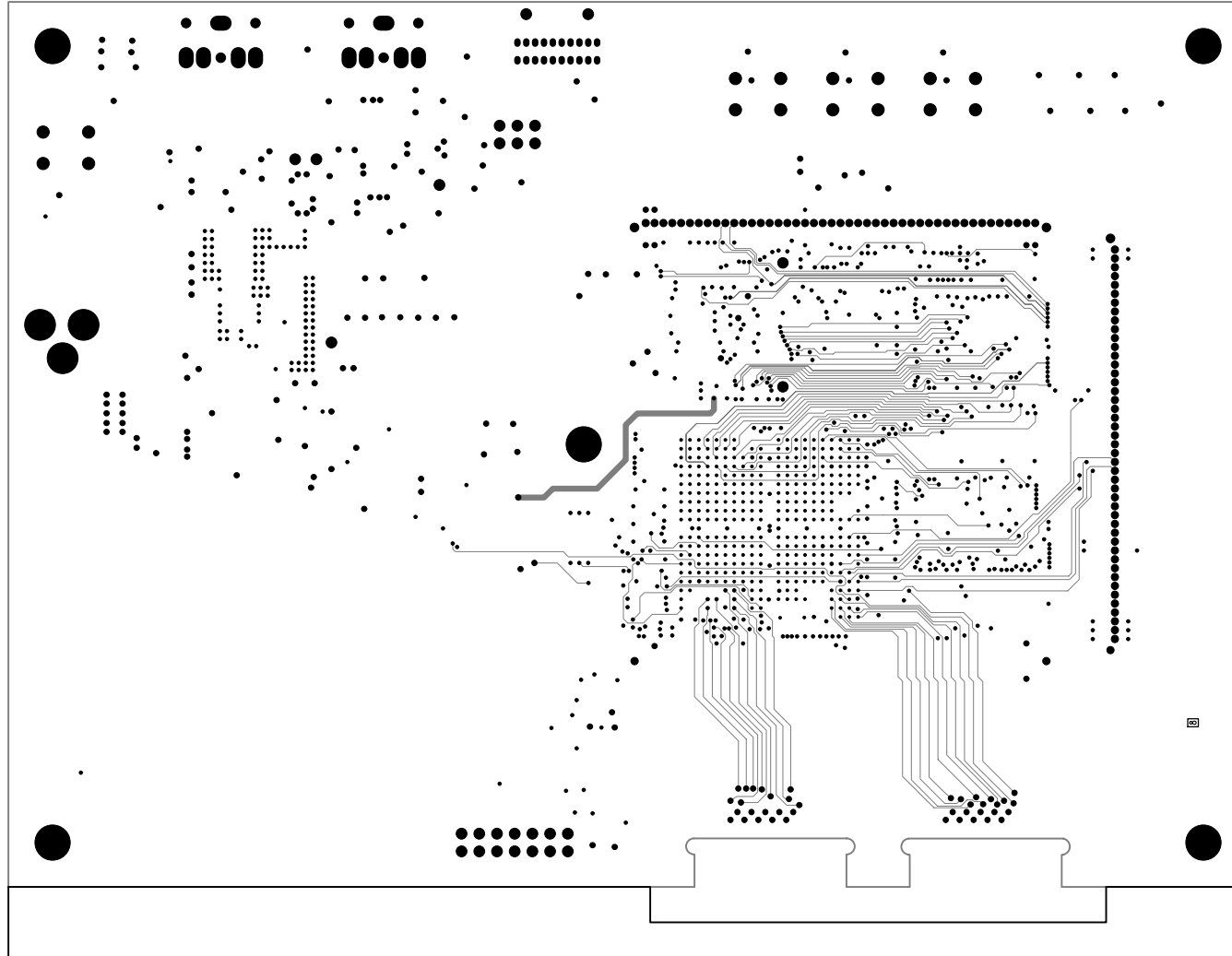
UNLESS OTHERWISE SPECIFIED DIMENSIONS ARE IN INCHES TOLERANCES ARE : .XX +/- .010 .XXX +/- .005	CONTRACT NO.		 20 Cotton Road Nashua, New Hampshire 03063 (603) 883-2430 FAX (603) 882-2655
	APPROVALS	DATE	
MATERIAL	DRAWN	06/27/07	LAYER 5 INTERNAL SIGNAL ADSP-21160 EZ-KIT LITE
	CHECKED		
FINISH	ENGINEERING		SIZE B DWG. NO. A0164-2001-REF REV. 2.0
	QUALITY		
DO NOT SCALE THIS DRAWING	MANUFACTURING		SCALE 1 : 1 SHEET 5 OF 16




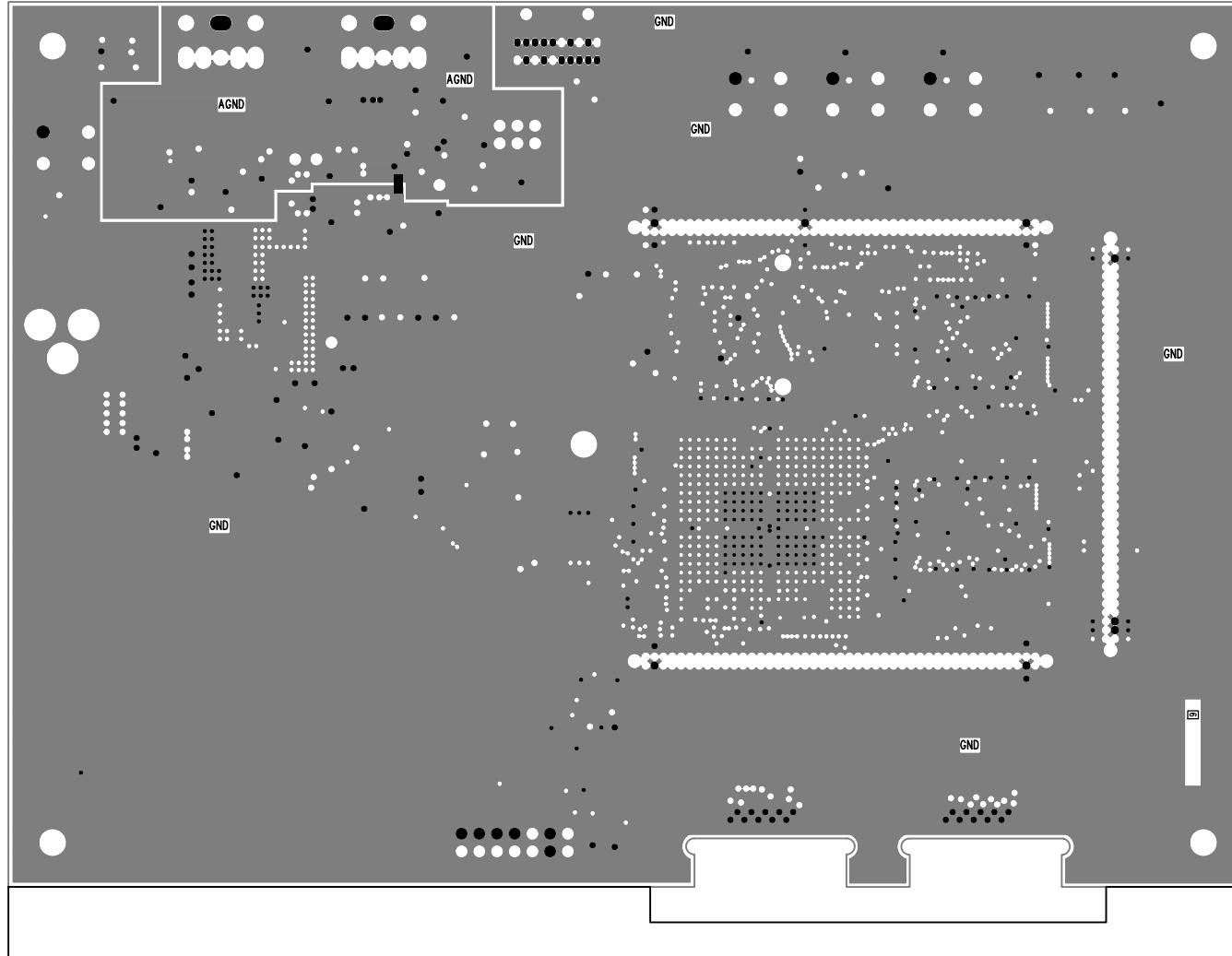
UNLESS OTHERWISE SPECIFIED DIMENSIONS ARE IN INCHES TOLERANCES ARE : .XX +/- .010 .XXX +/- .005	CONTRACT NO.		 20 Cotton Road Nashua, New Hampshire 03063 (603) 883-2430 FAX (603) 882-2655		
	APPROVALS	DATE			
MATERIAL	DRAWN	06/27/07	LAYER 6 5V PLANE ADSP-21160 EZ-KIT LITE		
	CHECKED				
FINISH	ENGINEERING		SIZE	DWG. NO. A0164-2001-REF	REV. 2.0
	QUALITY		B		
DO NOT SCALE THIS DRAWING	MANUFACTURING		SCALE 1 : 1	SHEET 6 OF 16	




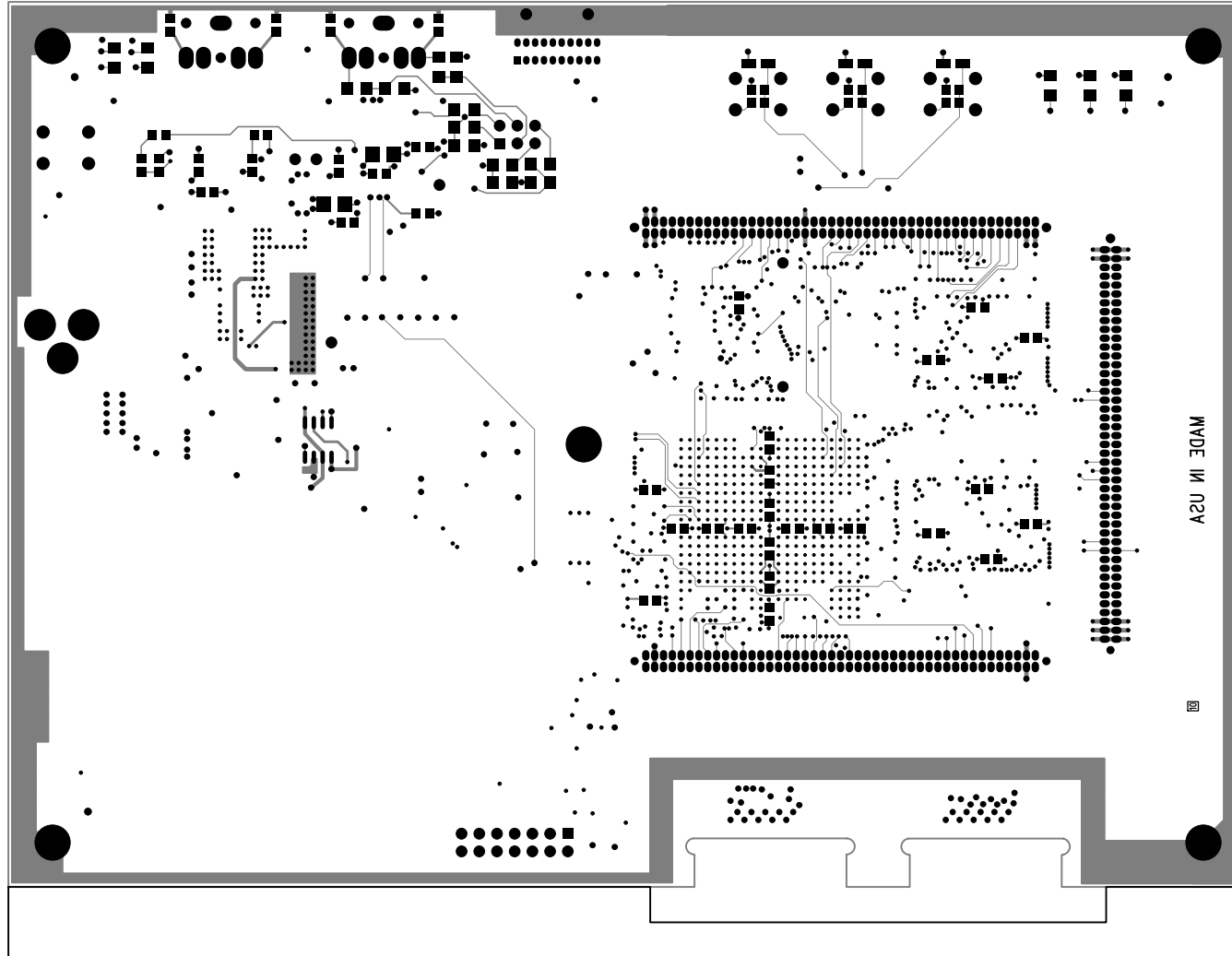
UNLESS OTHERWISE SPECIFIED DIMENSIONS ARE IN INCHES TOLERANCES ARE : .XX +/- .010 .XXX +/- .005	CONTRACT NO.		 20 Cotton Road Nashua, New Hampshire 03063 (603) 883-2430 FAX (603) 882-2655
	APPROVALS	DATE	
MATERIAL	DRAWN	06/27/07	LAYER 7 INTERNAL SIGNAL ADSP-21160 EZ-KIT LITE
	CHECKED		
FINISH	ENGINEERING		SIZE B DWG. NO. A0164-2001-REF REV. 2.0
	QUALITY		
DO NOT SCALE THIS DRAWING	MANUFACTURING		SCALE 1 : 1 SHEET 7 OF 16




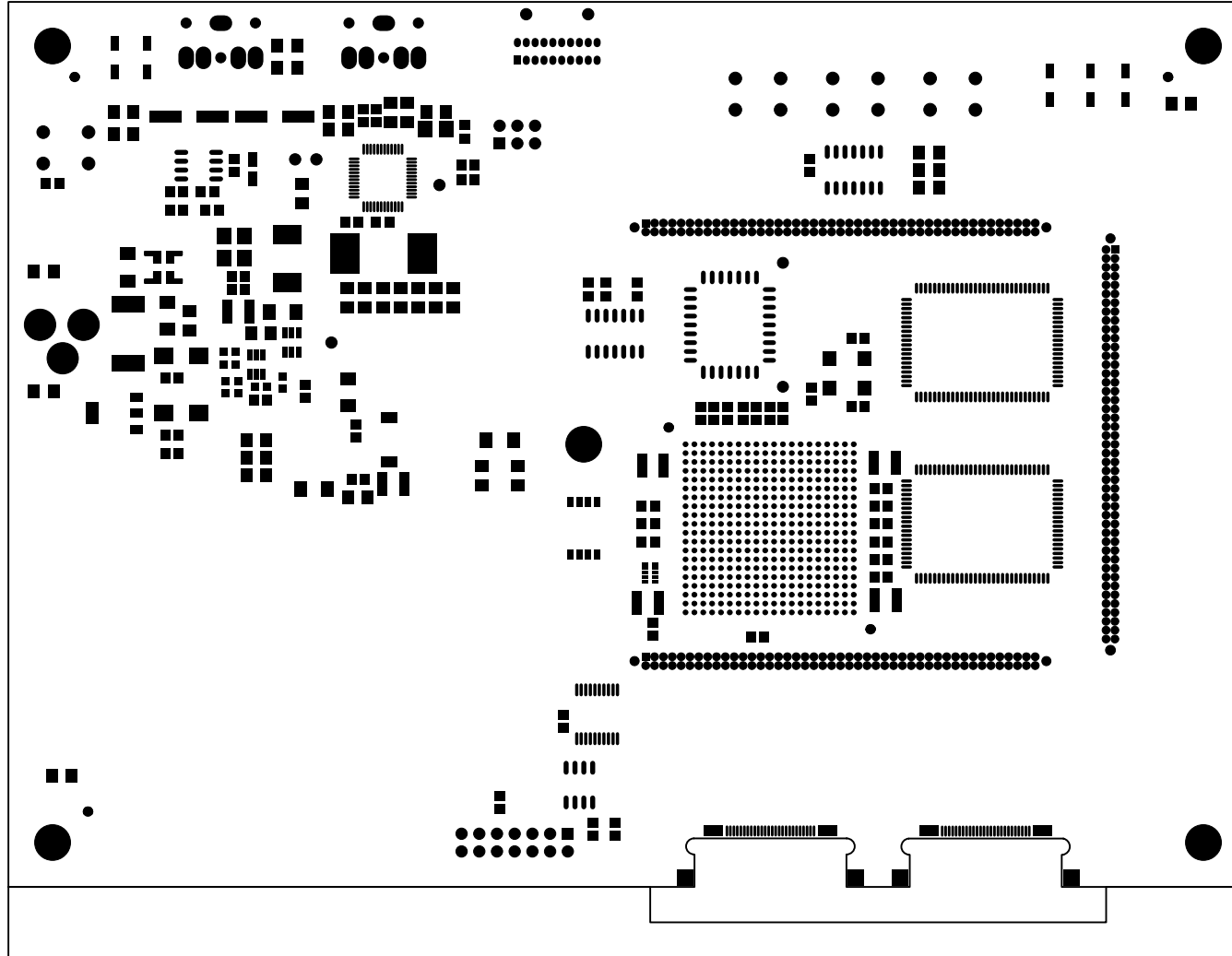
UNLESS OTHERWISE SPECIFIED DIMENSIONS ARE IN INCHES TOLERANCES ARE : .XX +/- .010 .XXX +/- .005	CONTRACT NO.		 20 Cotton Road Nashua, New Hampshire 03063 (603) 883-2430 FAX (603) 882-2655
	APPROVALS	DATE	
MATERIAL	DRAWN	06/27/07	LAYER 8 INTERNAL SIGNAL ADSP-21160 EZ-KIT LITE
	CHECKED		
FINISH	ENGINEERING		SIZE B DWG. NO. A0164-2001-REF REV. 2.0
	QUALITY		
DO NOT SCALE THIS DRAWING	MANUFACTURING		SCALE 1 : 1 SHEET 8 OF 16




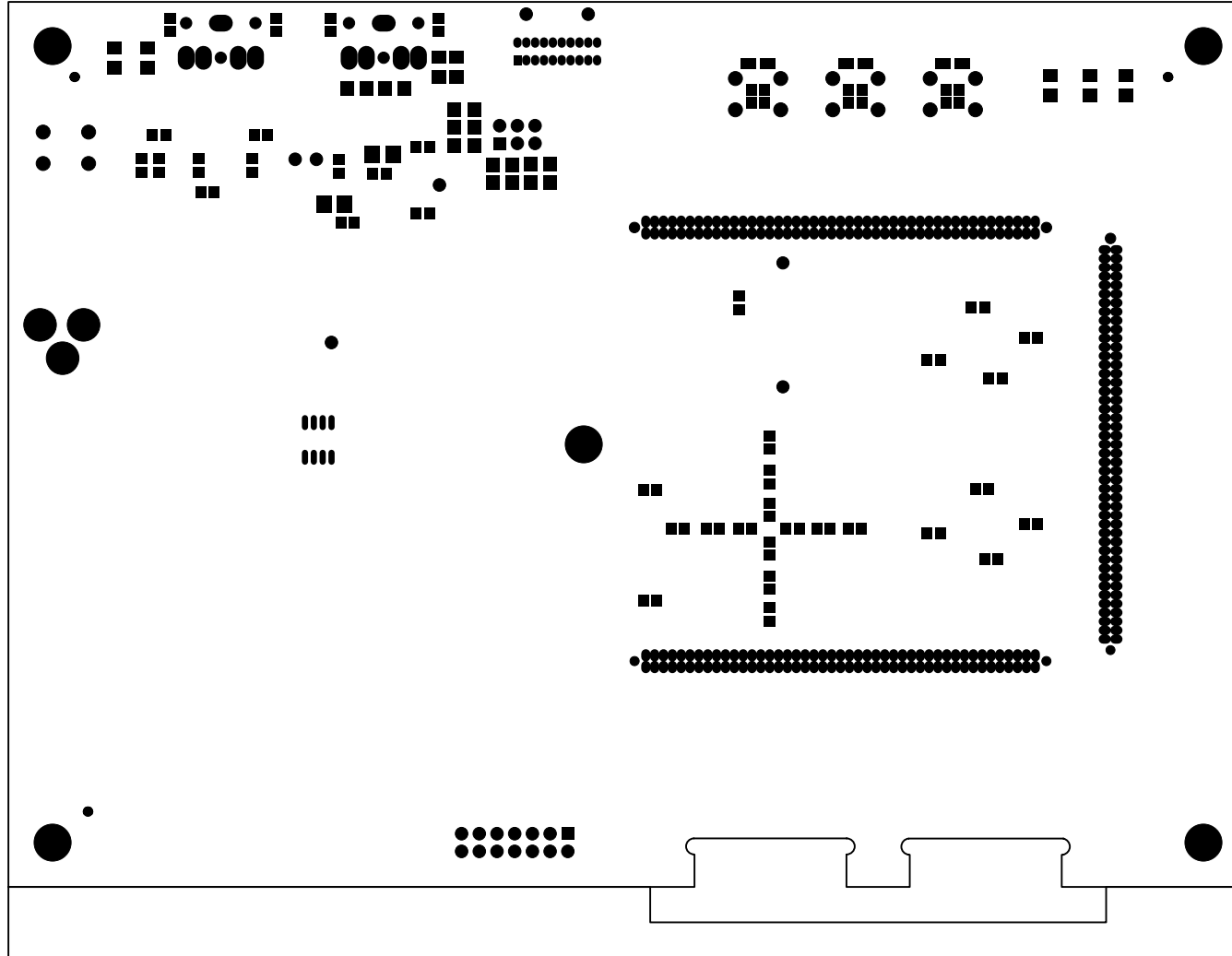
UNLESS OTHERWISE SPECIFIED DIMENSIONS ARE IN INCHES TOLERANCES ARE : .XX +/- .010 .XXX +/- .005	CONTRACT NO.		 20 Cotton Road Nashua, New Hampshire 03063 (603) 883-2430 FAX (603) 882-2655		
	APPROVALS	DATE			
MATERIAL	DRAWN	06/27/07	LAYER 9 GROUND PLANE ADSP-21160 EZ-KIT LITE		
	CHECKED				
FINISH	ENGINEERING		SIZE	DWG. NO. A0164-2001-REF	REV.
	QUALITY		B		2.0
DO NOT SCALE THIS DRAWING	MANUFACTURING		SCALE 1 : 1	SHEET 9 OF 16	




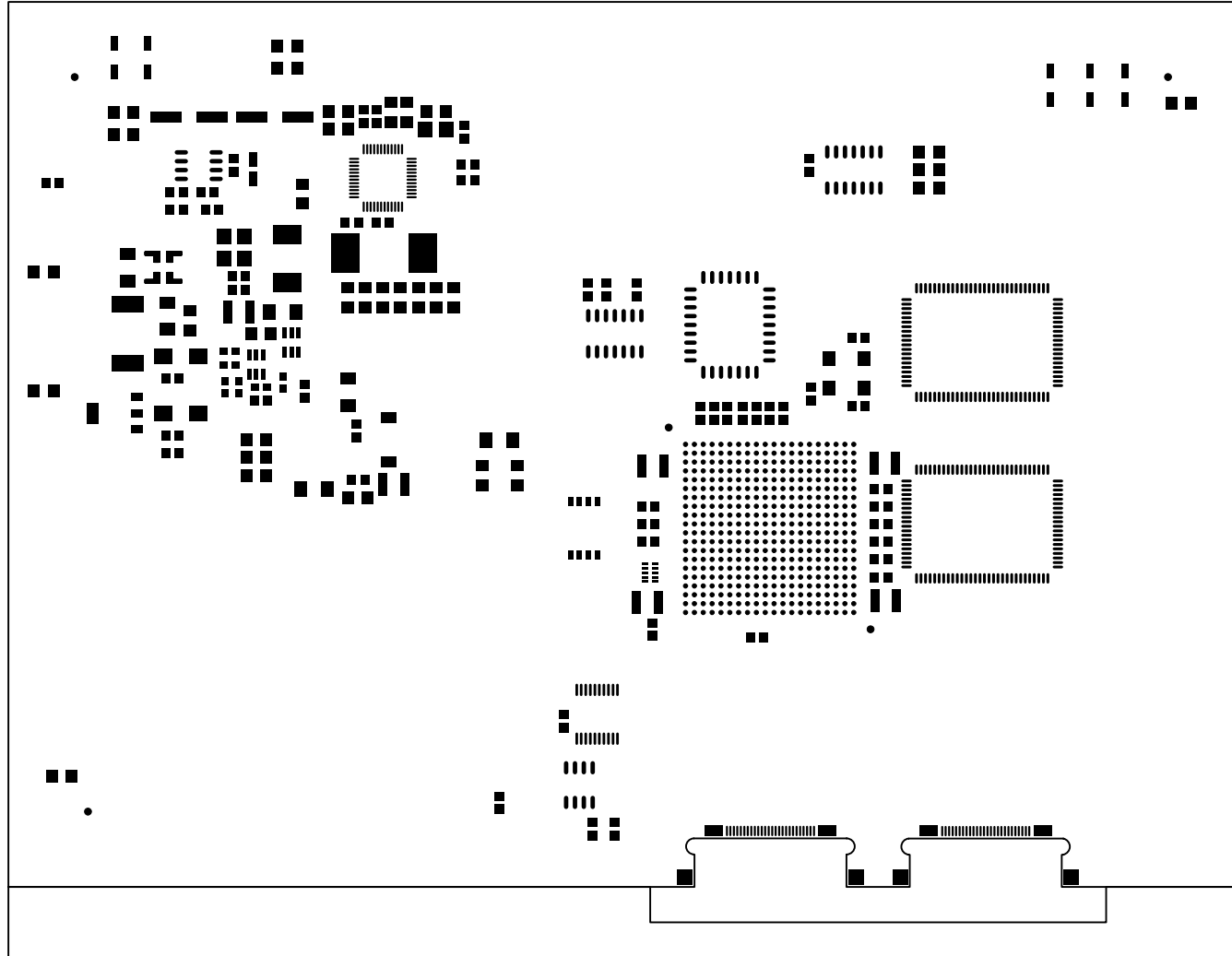
UNLESS OTHERWISE SPECIFIED DIMENSIONS ARE IN INCHES TOLERANCES ARE : .XX +/- .010 .XXX +/- .005	CONTRACT NO.		 20 Cotton Road Nashua, New Hampshire 03063 (603) 883-2430 FAX (603) 882-2655
	APPROVALS	DATE	
MATERIAL	DRAWN	06/27/07	LAYER 10 BOTTOM SIDE ADSP-21160 EZ-KIT LITE
	CHECKED		
FINISH	ENGINEERING		SIZE B DWG. NO. A0164-2001-REF REV. 2.0
	QUALITY		
DO NOT SCALE THIS DRAWING	MANUFACTURING		SCALE 1 : 1 SHEET 10 OF 16




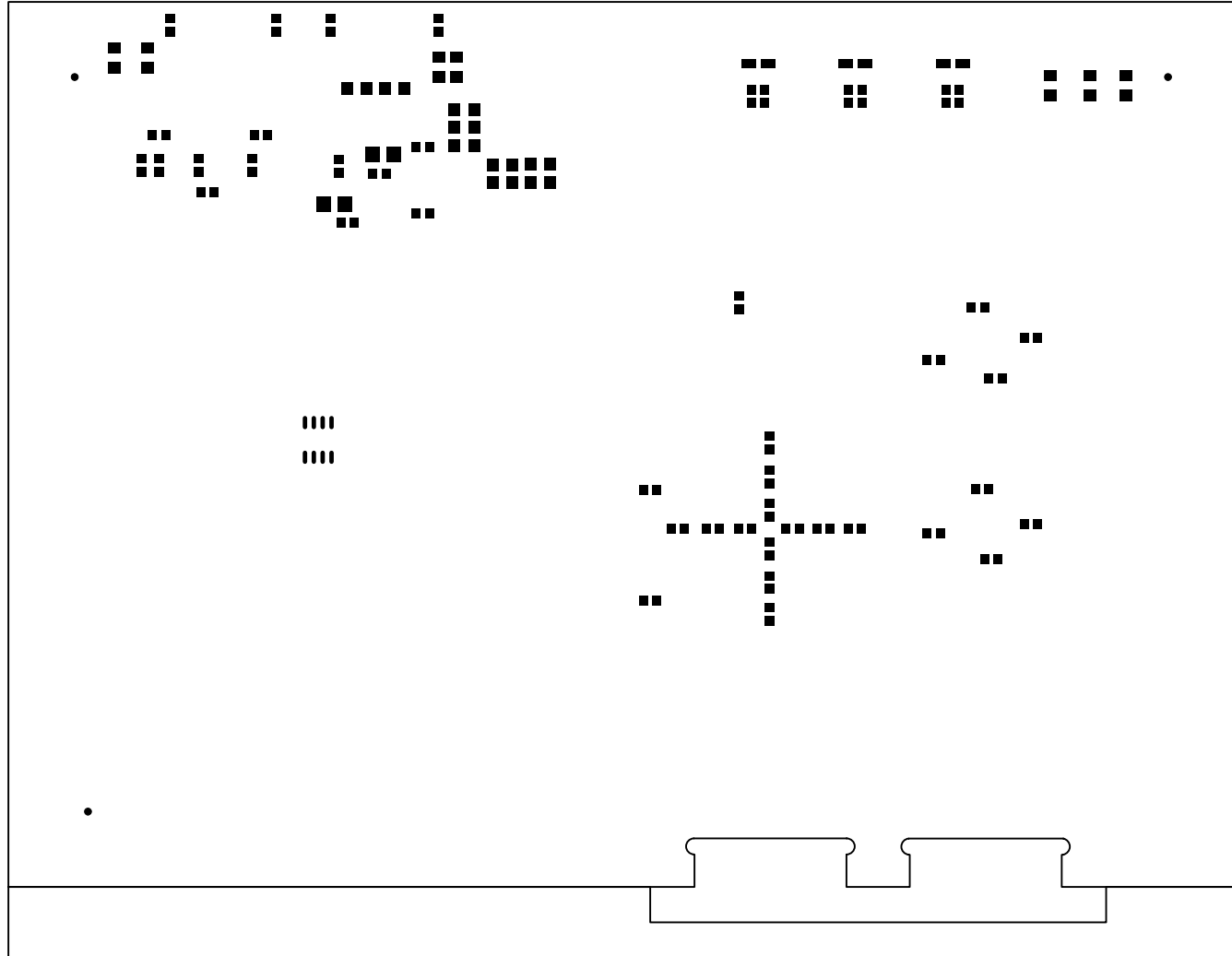
UNLESS OTHERWISE SPECIFIED DIMENSIONS ARE IN INCHES TOLERANCES ARE : .XX +/- .010 .XXX +/- .005	CONTRACT NO.		 20 Cotton Road Nashua, New Hampshire 03063 (603) 883-2430 FAX (603) 882-2655		
	APPROVALS	DATE			
MATERIAL	DRAWN	06/27/07	SOLDER MASK TOP SIDE ADSP-21160 EZ-KIT LITE		
	CHECKED				
FINISH	ENGINEERING		SIZE	DWG. NO. A0164-2001-REF	REV. 2.0
	QUALITY		B		
DO NOT SCALE THIS DRAWING	MANUFACTURING		SCALE 1 : 1	SHEET 11 OF 16	




UNLESS OTHERWISE SPECIFIED DIMENSIONS ARE IN INCHES TOLERANCES ARE : .XX +/- .010 .XXX +/- .005	CONTRACT NO.		 20 Cotton Road Nashua, New Hampshire 03063 (603) 883-2430 FAX (603) 882-2655
	APPROVALS	DATE	
MATERIAL	DRAWN	06/27/07	SOLDER MASK BOTTOM SIDE ADSP-21160 EZ-KIT LITE
	CHECKED		
FINISH	ENGINEERING		SIZE B DWG. NO. A0164-2001-REF REV. 2.0
	QUALITY		
DO NOT SCALE THIS DRAWING	MANUFACTURING		SCALE 1 : 1 SHEET 12 OF 16



UNLESS OTHERWISE SPECIFIED DIMENSIONS ARE IN INCHES TOLERANCES ARE : .XX +/- .010 .XXX +/- .005	CONTRACT NO.		 20 Cotton Road Nashua, New Hampshire 03063 (603) 883-2430 FAX (603) 882-2655
	APPROVALS	DATE	
MATERIAL	DRAWN	06/27/07	SOLDER PASTE TOP SIDE ADSP-21160 EZ-KIT LITE
	CHECKED		
FINISH	ENGINEERING		SIZE B
	QUALITY		
DO NOT SCALE THIS DRAWING	MANUFACTURING		DWG. NO. A0164-2001-REF SCALE 1 : 1
			REV. 2.0 SHEET 15 OF 16



UNLESS OTHERWISE SPECIFIED DIMENSIONS ARE IN INCHES TOLERANCES ARE : .XX +/- .010 .XXX +/- .005	CONTRACT NO.		 20 Cotton Road Nashua, New Hampshire 03063 (603) 883-2430 FAX (603) 882-2655
	APPROVALS	DATE	
MATERIAL	DRAWN	06/27/07	SOLDER PASTE BOTTOM SIDE ADSP-21160 EZ-KIT LITE
	CHECKED		
FINISH	ENGINEERING		SIZE B DWG. NO. A0164-2001-REF REV. 2.0
	QUALITY		
DO NOT SCALE THIS DRAWING	MANUFACTURING		SCALE 1 : 1 SHEET 16 OF 16